

Courtesy Of Melissa Saretsky Of Century 21 Masters

\$0 - 15612 116 Avenue, Edmonton

MLS® #E4412354

\$0

0 Bedroom, 0.00 Bathroom,
Industrial on 0.00 Acres

Alberta Park Industrial, Edmonton, AB

Discover a prime commercial condo bay FOR LEASE located at 15612 116 Ave, perfect for your business expansion. This versatile space is currently set up as a showroom, featuring ample shelving to display your products. With two levels of office and showroom space, it offers a flexible layout to suit various business needs. The property includes a convenient back entrance with a roll-up door, making loading and unloading a breeze. The second floor boasts large windows that flood the space with natural light, creating an inviting atmosphere for both employees and customers. Located in a thriving area, this condo bay benefits from excellent visibility and accessibility. Whether you're looking to showcase your products, establish an office, or expand your operations, this space offers the ideal foundation for your business.



15612 116 Ave NW, Edmonton, AB

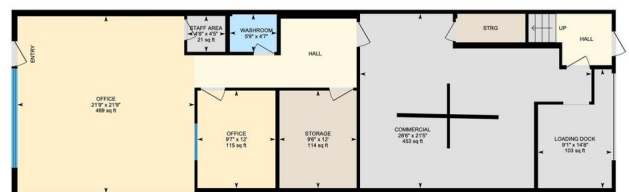
Main Floor Exterior Area 1585.08 sq ft
Interior Area 1569.02 sq ft

Built in 1978

Essential Information

MLS® #	E4412354
Bathrooms	0.00
Acres	0.00
Year Built	1978
Type	Industrial
Status	Active

Community Information



0 6 12 ft

PREPARED: 2024/10/31



Address	15612 116 Avenue
Area	Edmonton
Subdivision	Alberta Park Industrial
City	Edmonton
County	ALBERTA
Province	AB
Postal Code	T5M 3S5

Exterior

Exterior	Wood Frame
Construction	Wood Frame

Additional Information

Date Listed	October 31st, 2024
Days on Market	156
Zoning	Zone 40

DATA IS DEEMED RELIABLE BUT IS NOT GUARANTEED ACCURATE BY THE REALTORS® ASSOCIATION OF EDMONTON. COPYRIGHT 2025 BY THE REALTORS® ASSOCIATION OF EDMONTON. ALL RIGHTS RESERVED. Trademarks are owned or controlled by the Canadian Real Estate Association (CREA) and identify real estate professionals who are members of CREA (REALTOR®, REALTORS®) and/or the quality of services they provide (MLS®, Multiple Listing Service®)

Listing information last updated on April 4th, 2025 at 11:32pm MDT