

Courtesy Of Kurt Tovillo Of MaxWell Polaris

# \$69,900 - 302 10615 110 Street, Edmonton

MLS® #E4422780

**\$69,900**

1 Bedroom, 1.00 Bathroom, 700 sqft  
Condo / Townhouse on 0.00 Acres

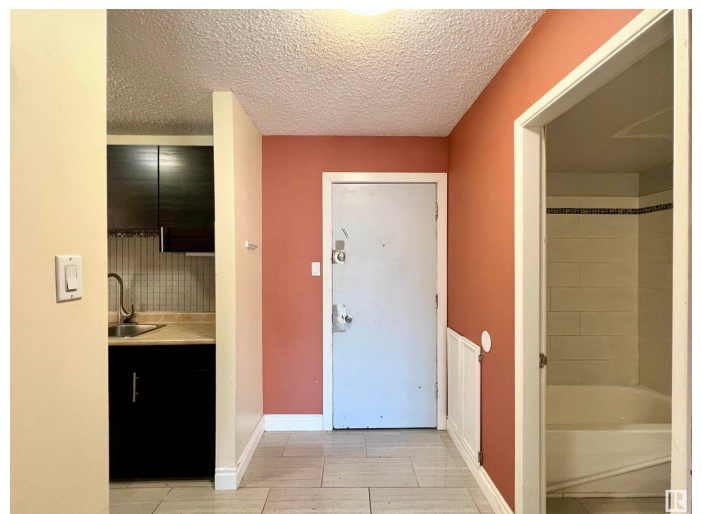
Queen Mary Park, Edmonton, AB

Seize the opportunity to own a prime investment property just a stone's throw from MacEwan University and Rogers Place! Welcome to Ashton Court in the vibrant Queen Mary Park community, where downtown living meets ultimate convenience. This east-facing unit boasts a balcony perfect for sipping your morning coffee while soaking up the summer sun. With rough-ins for in-suite laundry and shared laundry available in the building, this home offers a perfect blend of comfort and practicality. Don't miss out on this incredible chance to own in one of Edmonton's most sought-after areas! PROPERTY IS SOLD AS IS WHERE IS AT THE TIME OF POSSESSION, NO WARRANTIES OR REPRESENTATIONS.

Built in 1972

## Essential Information

MLS® #	E4422780
Price	\$69,900
Bedrooms	1
Bathrooms	1.00
Full Baths	1
Square Footage	700
Acres	0.00
Year Built	1972



Type	Condo / Townhouse
Sub-Type	Lowrise Apartment
Style	Single Level Apartment
Status	Active

### **Community Information**

Address	302 10615 110 Street
Area	Edmonton
Subdivision	Queen Mary Park
City	Edmonton
County	ALBERTA
Province	AB
Postal Code	T5H 3C7

### **Amenities**

Amenities	On Street Parking, Security Door
Parking	Stall

### **Interior**

Appliances	Dishwasher-Built-In, Hood Fan, Refrigerator, Stove-Electric, Window Coverings
Heating	Baseboard, Hot Water, Natural Gas
# of Stories	4
Stories	1
Has Basement	Yes
Basement	None, No Basement

### **Exterior**

Exterior	Wood, Brick, Vinyl
Exterior Features	Level Land, Schools, Shopping Nearby, View City, View Downtown
Roof	Asphalt Shingles
Construction	Wood, Brick, Vinyl
Foundation	Concrete Perimeter

### **Additional Information**

Date Listed	February 25th, 2025
Days on Market	41
Zoning	Zone 08
RE / Bank Owned	Yes

Condo Fee            \$383

DATA IS DEEMED RELIABLE BUT IS NOT GUARANTEED ACCURATE BY THE REALTORS® ASSOCIATION OF EDMONTON. COPYRIGHT 2025 BY THE REALTORS® ASSOCIATION OF EDMONTON. ALL RIGHTS RESERVED. Trademarks are owned or controlled by the Canadian Real Estate Association (CREA) and identify real estate professionals who are members of CREA (REALTOR®, REALTORS®) and/or the quality of services they provide (MLS®, Multiple Listing Service®)

Listing information last updated on April 7th, 2025 at 3:17am MDT