

\$0 - 210 9252 34 Avenue, Edmonton

MLS® #E4424690

\$0

0 Bedroom, 0.00 Bathroom,
Office on 0.00 Acres

Strathcona Industrial Park, Edmonton, AB

Prime Office Space for Lease on 34 Avenue in South Edmonton! This fully furnished office space offers 3 private office rooms along with access to a shared open office area.

Conveniently located in a high-demand business district, this space is move-in ready â€” perfect for professionals, small businesses, or remote teams looking for a flexible and affordable workspace. Great access to major roads, transit, and nearby amenities. Ideal opportunity to establish your business in a sought-after southside location!

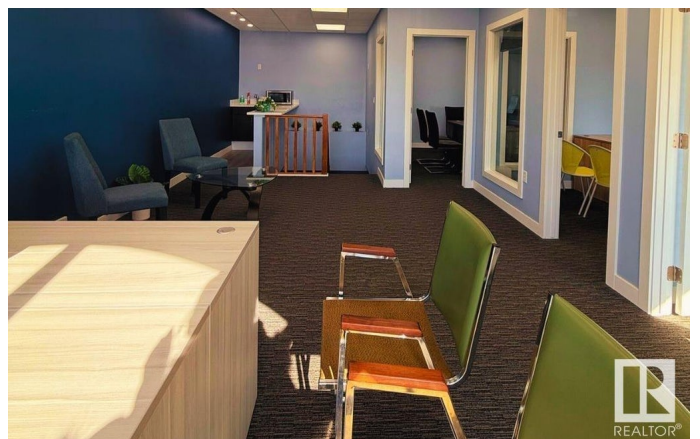
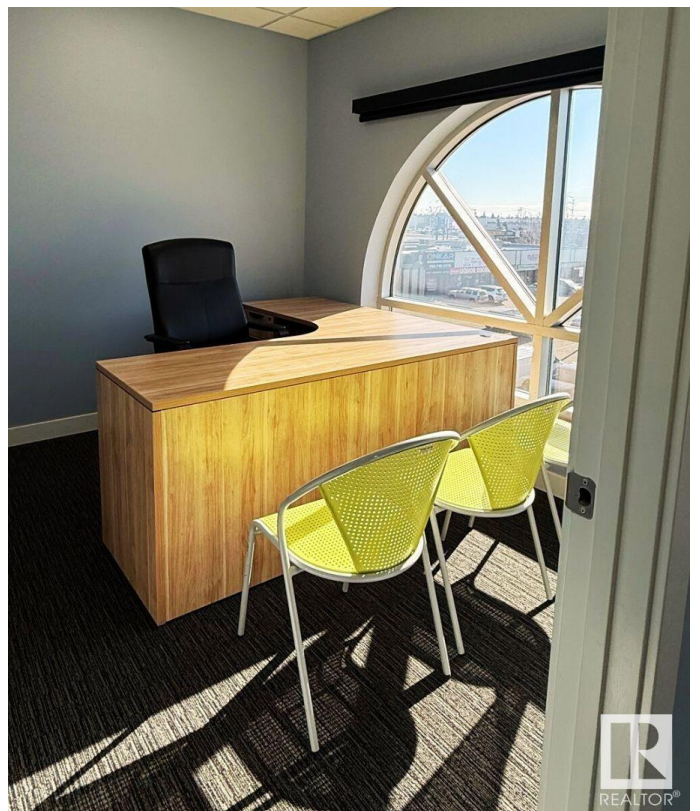
Built in 1998

Essential Information

MLS® #	E4424690
Bathrooms	0.00
Acres	0.00
Year Built	1998
Type	Office
Status	Active

Community Information

Address	210 9252 34 Avenue
Area	Edmonton
Subdivision	Strathcona Industrial Park
City	Edmonton
County	ALBERTA



Province AB
Postal Code T6E 5P2

Exterior

Exterior Mixed
Construction Mixed

Additional Information

Date Listed March 5th, 2025
Days on Market 30
Zoning Zone 41

DATA IS DEEMED RELIABLE BUT IS NOT GUARANTEED ACCURATE BY THE REALTORS® ASSOCIATION OF EDMONTON. COPYRIGHT 2025 BY THE REALTORS® ASSOCIATION OF EDMONTON. ALL RIGHTS RESERVED. Trademarks are owned or controlled by the Canadian Real Estate Association (CREA) and identify real estate professionals who are members of CREA (REALTOR®, REALTORS®) and/or the quality of services they provide (MLS®, Multiple Listing Service®)

Listing information last updated on April 4th, 2025 at 11:17am MDT